

## Color Inkjet paper

Photo Quality



- Smooth and white colored matt paper.
- Supportive vivid and neat color.
- Ideal for high quality document, business material and image printing.
- Colored report, business material printing and Presentation.
- **Weight : 100 g/m<sup>2</sup>**



### Product code and size

Code	Application	Base	Weight	Sheets/Pack	Paper Size
A5640 / E5640	Color Inkjet Paper	Matt	100 g/m <sup>2</sup>	100	210 X 297 mm [ A4 ]
A5630 / E5630	Color Inkjet Paper	Matt	100 g/m <sup>2</sup>	100	297 X 420 mm [ A3 ]
L5640	Color Inkjet Paper	Matt	100 g/m <sup>2</sup>	100	8 1/2" X 11" [ LETTER ]



## Matt/Glossy Color laser paper

[Matt]

- Smooth and vivid printing due to special coating.
- Colored report, business material printing, presentation.
- Printing on both side of paper.
- **Weight : 100 g/m<sup>2</sup>**

[Glossy]

- Subdued semi glossy laser photo paper.
- Printing with various uses such as pop, menu and flyer.
- **Weight : 160 g/m<sup>2</sup>**



### Product code and size

Code	Application	Base	Weight	Sheets/Pack	Paper Size
A5510 / E5510	Color Laser Paper	Matt	100 g/m <sup>2</sup>	250	210 X 297 mm [ A4 ]
A5500 / E5500	Color Laser Paper	Glossy	160 g/m <sup>2</sup>	20	210 X 297 mm [ A4 ]



How to make the best printing condition with Printec photo paper!

### Photo paper, right printing settings make high quality printings

Unless being upright printer setting, print quality and paper feeding of printer is failures because Photo Paper is thicker than A4 size plain paper and surface of photo paper is soft and smooth. If so, The printing option will help to solve out the problem and get a photo quality output.

#### How to distinguish a printing side



Printing should be on bright face.

#### Setting up the printer - the recommended setting for getting best results

[Control panel] - [Printer and faxes] - [Properties] - [Printing options]  
After choosing the printers, please set the printing options according to the below instruction.ows.

	Printer Quality	Paper Type
<b>EPSON</b>	Fine	• Photo Quality Inkjet Paper • Photo Paper • Premium Glossy Paper
<b>hp</b>	Best	• Inkjet Paper • Photo Paper • Premium Glossy Paper
<b>Canon</b>	High	• Coated Paper • Glossy Photo Paper
<b>SAMSUNG</b>	Maximum	• Coated Paper • Glossy Photo Paper

EPSON, hp, Canon are registered trademarks of their respective.

## Glossy Photo paper

Photo Quality



- Ideal for high resolution photo images with suitable thickness.
- Providing real vivid color.
- 100% waterproof coating.
- Ideal for digital image printing with smooth gloss.
- Ideal for album and portfolio.
- **Weight : 220g/m<sup>2</sup>**



### Product code and size

Code	Application	Base	Weight	Sheets/Pack	Paper Size
A6310 / E6310	Glossy Photo Paper	Cast Coated	220 g/m <sup>2</sup>	20	210 X 297 mm [ A4 ]
A6320 / E6320	Glossy Photo Paper	Cast Coated	220 g/m <sup>2</sup>	20	297 X 420 mm [ A3 ]
L6310	Glossy Photo Paper	Cast Coated	220 g/m <sup>2</sup>	25	8 1/2" X 11" [ LETTER ]



## Premium High Glossy Photo paper

Photo Quality



- Smooth and high glossy coating.
- Subdued and luxurious photo paper
- Supportive 5760 dpi high resolution perfectly.
- High durability and everlasting vivid color.
- 100% waterproof coating.
- Suitable for professional photo printing, graphic printing, portfolio and poster.
- **Weight : 255g/m<sup>2</sup>**



### Product code and size

Code	Application	Base	Weight	Sheets/Pack	Paper Size
A7301 / E7301	High Glossy Photo Paper	Resin Coated	255 g/m <sup>2</sup>	20	102 X 152 mm [ 4"x6" ]
A7310 / E7310	High Glossy Photo Paper	Resin Coated	255 g/m <sup>2</sup>	20	210 X 297 mm [ A4 ]
A7320 / E7320	High Glossy Photo Paper	Resin Coated	255 g/m <sup>2</sup>	20	297 X 420 mm [ A3 ]
L7310	High Glossy Photo Paper	Resin Coated	255 g/m <sup>2</sup>	25	8 1/2" X 11" [ LETTER ]



## Premium Semi Glossy Photo paper

Photo Quality



- Smoothly coated semi-glossy.
- Luxurious and sophisticated impression.
- Brightness and subdued semi-glossy photo paper.
- Supportive 5760 dpi high resolution perfectly.
- High durability and everlasting vivid color.
- 100% waterproof coating.
- Suitable for professional photo printing, graphic printing, portfolio and poster.
- **Weight : 251g/m<sup>2</sup>**



### Product code and size

Code	Application	Base	Weight	Sheets/Pack	Paper Size
A7401 / E7401	Semi Glossy Photo Paper	Resin Coated	251 g/m <sup>2</sup>	20	102 X 152 mm [ 4"x6" ]
A7330 / E7330	Semi Glossy Photo Paper	Resin Coated	251 g/m <sup>2</sup>	20	210 X 297 mm [ A4 ]
A7340 / E7340	Semi Glossy Photo Paper	Resin Coated	251 g/m <sup>2</sup>	20	297 X 420 mm [ A3 ]
L7330	Semi Glossy Photo Paper	Resin Coated	251 g/m <sup>2</sup>	25	8 1/2" X 11" [ LETTER ]

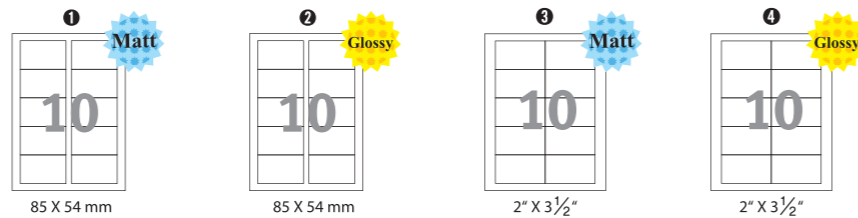


## Business Card paper

Photo Quality



- Fine micro cutting makes you cut them easily and clearly by hands.
- Smudge resistance because of special coating on the paper.
- Both matt and glossy available.
- **Weight: 200 g/m<sup>2</sup>**



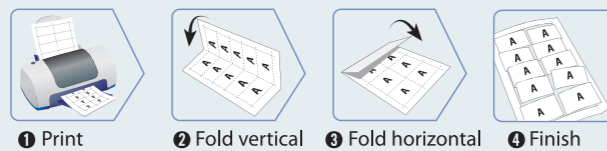
### Product code and size

Code	Application	Base	Weight	Labels/Sheet	Sheets/Pack	Paper Size	Avery Code
1 AB0100M / EB0100M	Business Card Paper	Matt	200 g/m <sup>2</sup>	10	20	85 X 54 mm	32030
2 AB0100G / EB0100G	Business Card Paper	Glossy	220 g/m <sup>2</sup>	10	10	85 X 54 mm	32030
3 LB0100M	Business Card Paper	Matt	200 g/m <sup>2</sup>	10	25	2" X 3 1/2"	8371
4 LB0100G	Business Card Paper	Glossy	220 g/m <sup>2</sup>	10	10	2" X 3 1/2"	8371

Micro cutting process  
Simple and easy cutting



### How to cut business card paper?

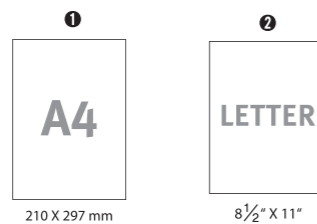


## Card paper

Photo Quality



- Matt paper can be used for invitations, greeting cards, menus & postcards and can be designed uniquely various certificates.
- Supportive high resolution images and colors.
- **Weight: 200g/m<sup>2</sup>**



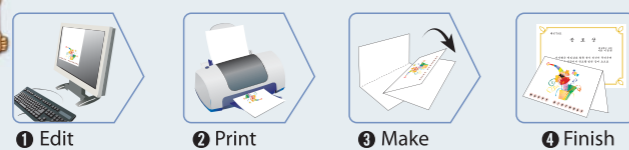
### Product code and size

Code	Application	Base	Weight	Sheets/Pack	Paper Size
1 A5000 / E5000	Card Paper (White)	Matt	200 g/m <sup>2</sup>	20	210 X 297 mm [ A4 ]
2 L5000	Card Paper (White)	Matt	200 g/m <sup>2</sup>	25	8 1/2" X 11" [ LETTER ]

Simple printing for  
certificate and card



### How to use card paper?



## Transfer Paper for bright color

Photo Quality



- Various applications like T-shirts, cushions and etc.
- Before printing, please set the printing option to 'Reverse Image' or 'Symmetry Image' in order the images to be printed correctly.
- Set the printed images toward to the bottom and iron it.
- Compatible with both inkjet and laser.
- **Weight: 105 g/m<sup>2</sup>**

### How to use?



### Product code and size

Code	Application	Weight	Sheets/Pack	Paper Size
A9115 / E9115	Transfer Paper (Bright Color)	105 g/m <sup>2</sup>	10	210 X 297 mm [ A4 ]

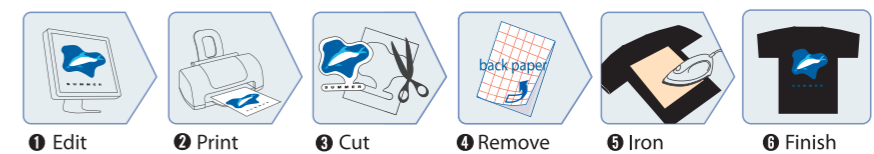
## Transfer Paper for dark color

Photo Quality



- It is suitable to use in the cotton fabric of dark color such as T-shirt and cushion.
- please remove a liner and iron it after putting a brown paper on the image.
- No need to use 'Reverse Image'.
- Compatible with both inkjet and laser.
- **Weight: 105 g/m<sup>2</sup>**

### How to use?



### Product code and size

Code	Application	Weight	Sheets/Pack	Paper Size
A9121 / E9121	Transfer Paper (Dark Color)	105 g/m <sup>2</sup>	3	210 X 297 mm [ A4 ]

## Magnet Paper

Photo Quality



- Suitable for advertisement, public information, sticker, educational purpose, keypad and etc.
- Stick to metal surface.
- Inkjet printer only.
- **Thickness: 200 mic**

### ※ Note

1. Print one by one due to high thickness of paper.
2. Set the printing options to photo paper and high quality printing.
3. Not recommendable for bottom up feeding printer.
4. Keep away from any data materials weak to magnetic.

### How to use?



### Product code and size

Code	Application	Weight	Sheets/Pack	Paper Size
A9210 / E9210	Magnet Paper	200 mic	5	210 X 297 mm [ A4 ]



## Laminating Pouch Film



- Glossy laminating films are available.
- Printings look more vivid after laminating and it offers long lasting from external hard conditions.
- **Thickness : 100mic**

- **Glossy Film**  
It is made by high transparent PET film that makes the color and image more vivid.

### Cautions for laminating machine

For clear coating, please keep the laminating machine and film away from the dust. And please don't exceed the recommended film thickness of laminating machine.

Temperature Coating: 80~120°C

### Product code and size

Code	Application	Base	Thickness	Sheets/Pack	Paper Size
AG1040 / EG1040	Laminating Pouch Film	Glossy	100mic(50/50)	20 , 100	216 X 303 mm [ A4 ]
AG1030 / EG1030	Laminating Pouch Film	Glossy	100mic(50/50)	20 , 100	303 X 426 mm [ A3 ]



### How to use Laminating Pouch Film?

1. Turn on a laminating machine and prepare the laminating films.
2. Put a paper to be coated between films correctly.
3. Insert it from the sealed-side and then, Pass it through.
4. Finish (if coated side is not even, please coat it again)

## Cold Pouch Film



- Thanks to high durability of adhesive coating, it makes it possible easy laminating without using a laminating machine.
- Put and laminate by removing a protection film behind.
- **Thickness : 100mic**

### Product code and size

Code	Application	Base	Thickness	Sheets/Pack	Paper Size
AG2140 / EG2140	Cold Pouch Film	Glossy	100mic	20 , 100	223 X 315 mm [ A4 ]
AG2130 / EG2130	Cold Pouch Film	Glossy	100mic	20 , 100	310 X 433 mm [ A3 ]



### How to use cold Pouch Film?

1. Remove the protection film of laminating film partially.
2. Put a paper into a film and laminate the film carefully while removing the protection film.
3. Laminate the film not to make air bubble by rubbing it slowly and carefully.
4. Trim to size to be fitted. And, the same way for double side laminating.

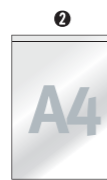
## OHP Film



- OHP Film is an 'OverHead Projector Film' and an exclusive film product used for an optical projector.
- High performance of expressing color resolution and printing is available on rough face.
- OHP Film for copier and inkjet printer.
- **Thickness : 107mic / 120mic**



Copier



Inkjet

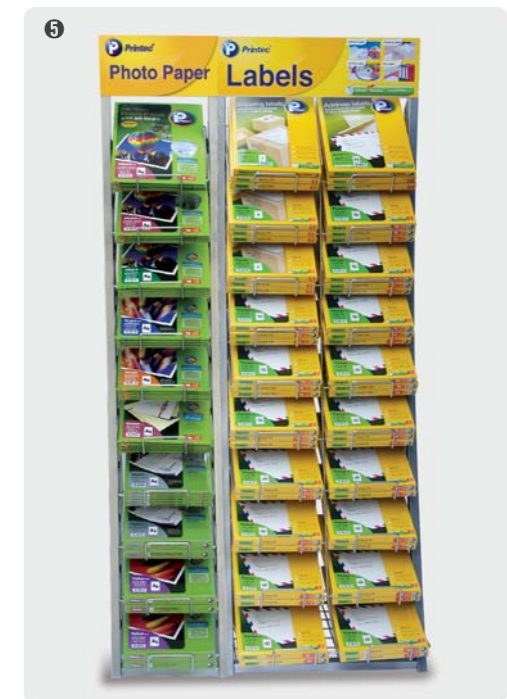
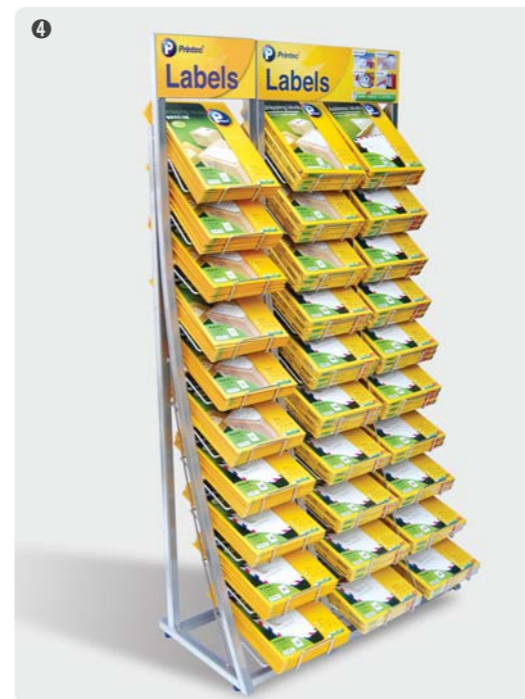
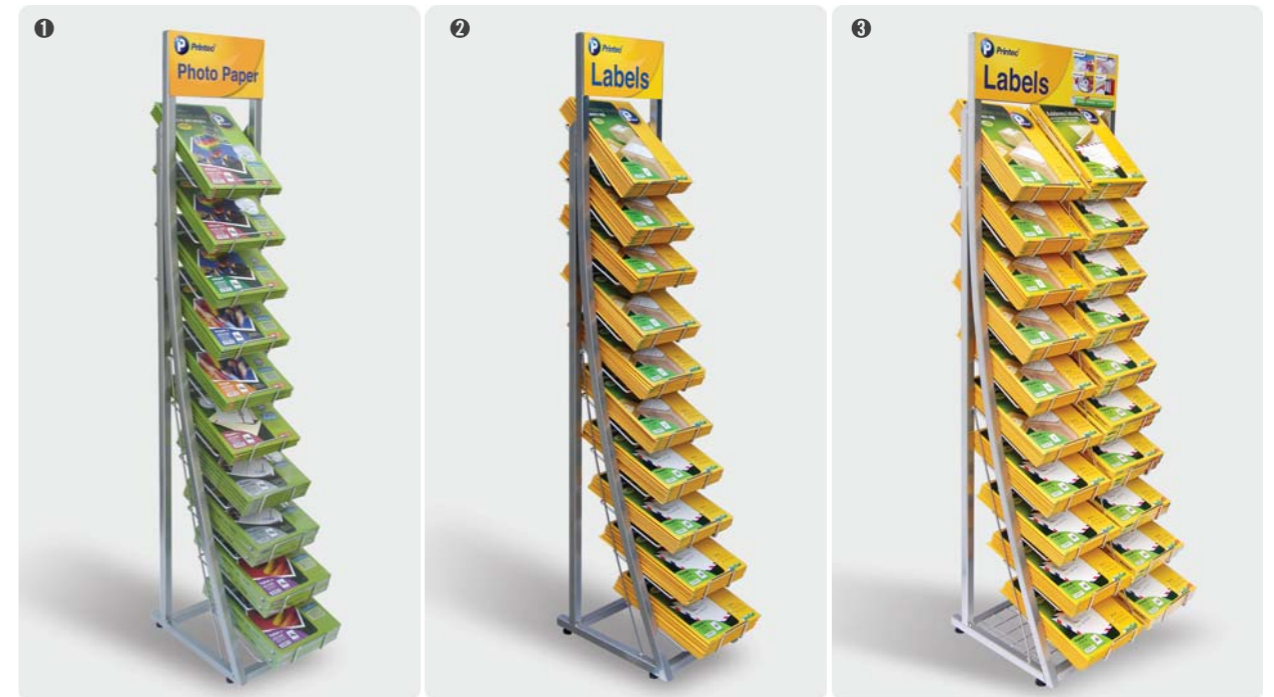
### Photo Quality

- High resolution color
- printing available on rough face

### Product code and size

Code	Application	Thickness	Sheets/Pack	Size
① AV2000 / EV2000	OHP Film (Copier)	107 mic	100	210 X 297 mm [ A4 ]
② AV2300 / EV2300	OHP Film (Inkjet)	120 mic	50	210 X 297 mm [ A4 ]

## Display Stand (OA Labels / Photo Papers)



Display Stand	Dimension	Remark
① Photo Paper Display Stand (One tiered Steel)	W 305 X D 455 X H 1650 mm	
② Label Display Stand (One tiered Steel)	W 305 X D 455X H 1650 mm	
③ Label Display Stand (Two tiered Steel)	W 535 X D 455 X H 1650 mm	
④ Label Display Stand (Three tiered Steel)	W 840 X D 455 X H 1650 mm	
⑤ Photo Paper & Label Display Stand (Three tiered Steel)	W 840 X D 455 X H 1650 mm	